

2020 NEWH DC METRO

BOARD OF DIRECTORS

CHAPTER PRESIDENT

JENNIFER FARRIS (BANDURA DESIGN)
 jennifer@banduradesign.com

VP-ADMINISTRATION

TIMI MUSTAPHA (CHOICE HOTELS)
 timi.mustapha@choicehotels.com

VP-DEVELOPMENT

JULIE KAUFMANN (KAUFMANN ASSOC.)
 kaufmann.associates@gmail.com

PAST PRESIDENT

LESLIE ANDERSON (SPARTAN SURFACES)
 landerson@spartansurfaces.com

EXECUTIVE ADVISOR

MONICA MEADE (MARRIOTT INTL)
 monica.meade@marriott.com

TREASURER

COLIN HART (DEYOUNG ASSOC.)
 colin@deyoungonline.com

SECRETARY

SADIE COULTER (MARRIOTT INTL.)
 sadie.makarechi@marriott.com

SCHOLARSHIP

HANNAH MARKHAM (BASKERVILL)
 hyon@baskervill.com

PROGRAMMING

ASHLEY MICHAELS (HILTON)
 ashley.michaels@hilton.com
 &
 TARA GARWOOD (MOHAWK)
 tara_garwood@mohawkind.com

FUNDRAISING

ELLE PECHINEY (GLOBAL ALLIES)
 elle@globalallies.com

MEMBERSHIP

LAUREN MIKUS (DESIGNER TILE & STONE)
 lauren@designertilestone.com

MARKETING

MICHELLE MADISON (BANDURA DESIGN)
 michelle@banduradesign.com

TRADE SHOW

Laurie WOLIUNG (MARRIOTT INTL)
 laurie.woliung@marriott.com

HOSPITALITY

EMILY PERRY (BANDURA DESIGN)
 emily@banduradesign.com

COMMUNITY SERVICE

MIKE WEBB (INTERFACE)
 mike.webb@interface.com

Interested in volunteering?

We'd love to have you!

Email us at: nominations@newh.org

NEWH DC METRO

NEWSLETTER VOLUME 2 - SUMMER 2020

Welcome to the second NEWH DC Metro Newsletter! Now more than ever, our goal is to bring positivity, inspiration, and joy throughout our industry. We want you to know you are always welcome on this platform. We hear you, we see you, we want you to be heard. Let's unite as a community and be the change we want to see in the world.



Most of the 2020 Board of Directors gathering at our February Palentines event. We can't wait until we can all gather at a social event again. See below to see how our chapter has been staying connected during this pandemic. Until then, we wish you good health and happiness!

EVENT RECAP: ZOOM EDITION

The same NEWH...just virtual!

Shortly after the spread of the COVID-19 pandemic, the DC Metro Board of Directors met virtually to discuss how it could be of service to its members during this time while continuing to provide events. From these discussions, our first virtual series "Maven Motivation" was created: a virtual gathering on Zoom that calls on our Maven sponsors to create a collaborative concept to engage the chapter. The first event was a virtual stay at the "Four Square Resort." National Solutions pampered us with a demonstration on how to make a sugar hand scrub, Signature Carpet shared a crafted cocktail, Architectural Ceramics whipped up a shrimp scampi recipe, and Kim Swanson sung a coronavirus parody to the tune of "Don't Worry, Be Happy."

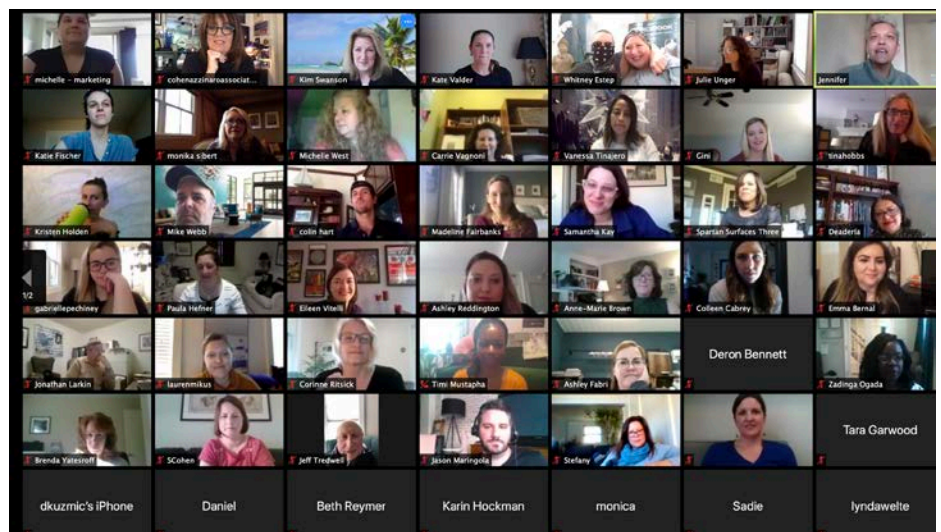
Up next, we celebrated Earth Day, where we learned about COVID-19's positive impact on the environment, and played Earth Day Bingo with Tarkett Hospitality, Momentum Textiles & Wallcoverings, Tilebar, Spacia Group, and Samuelson Furniture.

The following week, we played virtual trivia with BANDURAdesign, Cohen Azzinaro Associates, Milliken, Designer Tile & Stone, and DeYoung Associates. Our chapter broke into teams and battled six rounds for Postmate gift cards – truly a hot commodity.

Even though HD Vegas was virtual, Country Casual Teak partnered up with Shaw Contract | Shaw Hospitality to give us a Vegas experience of their own creation. They had prepared clips of shows, concerts, casinos, and sites of Vegas, topped off with some classic drink mixing demonstrations for our personal home bars.

Our latest Maven Motivation left us on a high note with "Positive on Purpose." Mavens Durkan, Distinction Hospitality, The Bo Group, Kellex, and Spartan Surfaces invited experts to share their positive perspectives with our chapter. John Hogan, Vice President of Design & Project Management at Global Design Americas Marriot International, spoke to the resiliency of our industry, while Tobin Schermerhorn, Principal/ Interior Designer/ Architect of Cauhaus Design led us in meditation. The virtual event ended with a game of "Guess That Top ID Firm!"

While it can be lonely to stay indoors, these virtual events have brought the connectivity that is central to NEWH in creative and entertaining ways. It has been such a positive experience seeing everyone's faces, even if they are a little pixelated. And of course, thank you to our marvelous Mavens for the amazing events. Can't wait to see you at the next virtual event!



NEW PRODUCTS THIS MONTH



Signature DESTINATION SPOT Graphic Blue

From coast to coast, city or mountain create your destination with our new custom carpet collection Graphic Blue DESTINATION SPOT Featuring a classic blue and white palette with graphic bold and modern aesthetics, inviting flexible customization based on your destination location.



robern. & bfdGREEN

I am pleased to announce that I am the new sales representative for ROBERN, a Kohler company, manufacturing a luxury line of mirrors, medicine cabinets, bath vanities with custom development expertise – made in the USA. This is the first time that ROBERN will have contract sales representation in MD, VA, and DC. I am excited that my awesome project manager, James Dirmeyer and I will be scheduling ZOOM and LIVE presentations. We will be working with Kelly Pappano, Regional Manager of Projects – East. Wishing everyone safety and good health especially during COVID-19. Lynda Welte 301.467.5951

NEW PROJECT SPOTLIGHT



New Logo - Same Great Design

You might remember this refresh as a purposeful evolution – not reinvention – of our 123-year-old brand. Our logo? Now quite literally outside the box and focusing specifically on the “ask” in Baskervill. Why the ask? Because we have long believed that asking, listening, and creating are critical to not only our process but our engagement with clients. That hasn’t changed. In fact, we’re putting more emphasis on the ask than ever before. Not only in how we work with our clients and our communities – digging deeper on the nuances of their needs, their goals, and their culture – but in how we work internally as well. Asking whether we’ve explored the tough questions, pushed the design boundaries, and lived out our values at every opportunity. We’ve adopted updated fonts and an expanded color palette, as well as some increased flexibility in tailoring our Ask.Listen. Create messaging with clients.



Junction Bakery | //3877

Located just steps away from Washington, D.C.’s bustling Union Station — amongst bars, hotels and historic residences — is Junction Bistro, Bar and Bakery. This Capitol Hill location marks the brand’s third outpost, following the established Alexandria and Maryland spaces.

The 42-seat restaurant, which has an additional 15 seats at the bar and 30 outside, embraces the aesthetic of the original Junction outpost—located in neighboring Alexandria, Virginia— which is known for its relaxed, neighborhood bistro-vibe. Inspired by the concept of ‘monumental artisans’—the people and physical structures behind

the great buildings of Washington, D.C.— multidisciplinary architecture and design firm //3877 examined the contextuality of the locale when strategizing its design approach for the eatery’s newest location. Celebrating the ‘nitty-gritty’ materials of the built environment, Junction’s design prioritizes a pared-down, eclectic aesthetic, favoring reds, blues and natural wood tones; red tile is a nod to the timeless history of the Capitol Hill brick, and the inclusion of natural wood brings warmth. Navy blue balances this warmth, in addition to acknowledging the District’s political history.

WE'VE MOVED: COMPOSITION HOSPITALITY GOT A NEW ADDRESS

Composition Hospitality is proud to announce our move to a bigger facility located in Ontario, California. Setting up for our customers' success, we have doubled our current size and tripled our overall manufacturing capabilities. Visit us!

We have a new showroom which allows us to showcase our custom products and finishes. Come and see your custom designed projects come to life on our assembly lines. Witness our attention to detail and quality first hand and see why our Innovative Service and Resourceful Solutions set Composition Hospitality apart from the rest.

*Composition Hospitality has been recognized by the County of San Bernardino as a fully compliant COVID-19 business partner.

For more details on Composition Hospitality's move and design capabilities, please contact Lynda Welte.



COMPANY ANNOUNCEMENT

ASHLEY FABRI LAUNCHES HER NEW COMPANY:
F2 RESOURCING COLLABORATIVE



Since a very young age Ashley, the principal and founder of F2 Resourcing Collaborative, has always had a love for the design industry. She received a degree in interior design and has had extensive experience in the world of design throughout her career. While most recently working as a product rep, she quickly realized that assisting designers in sourcing the best products is where her heart was and where she knew she would inspire and thrive.

Thus, F Squared was born!

Some of you are familiar with Ashley but she wanted to submit to the June Newsletter to update those of you she hasn't seen or connected with lately. She formerly worked for Donghia and at the beginning of 2020 took the leap to start her own independent rep group. She represents some of the same and well known lines she had while with Donghia and has been working on some additional great partnerships over these past few months. Her offering can be seen on her website. www.f2resourcingcollaborative.com

She looks forward to connecting and working with you!

We would love to partner with you on your next hotel project! www.distinctionhospitality.com

COMPANY ANNOUNCEMENT

BANDURA DESIGN HAS A NEW ADDRESS!
2216 RHODE ISLAND AVE, NE, WASHINGTON, DC 20018

Bandura Design has had a very exciting few months! We've moved into our new office located right next to a coffee shop – every designer's dream! The past two months we've installed two luxury Multi-Family projects located in Fairfax, VA and Alexandria, VA. Check out our website to see the install photos! Additionally, we are celebrating our 4th birthday this June and are so grateful to all the vendors, colleagues, friends who have supported us along the way! We are excited for much more design collaboration in the future.



DDC EVENT RECAP:

In January 2020, //3877 designers Abby Eckard and Shannon English launched the District Design Collaborative (DDC)—an initiative with the vision and mission of bringing people together, sharing ideas, challenging convention and creating a stronger design community. Unfortunately, DDC's May event had to be postponed due to COVID19, but that didn't stop the group from taking it head on virtual style! The event was centered around the importance of balancing wellbeing in solitude. A clinical dietician, kinesiologist/ strength and conditioning specialist, and a licensed professional counselor each presented on different avenues of wellness pertaining to their field. Following this insightful discussion, 3 design experts concluded with their importance of wellness in the workplace and how they implement these practices into their firms. With over 40 virtual participants, the event was a big success filled with collaborative discussions, questions, and insightful wellness tips. If you were unable to attend but are interested in learning more about these wellness tips while transitioning back into the office, please visit the DDC Instagram page @ddc.events and reach out to us for more information and stay tuned for future events!



WHAT HAS THE BOARD BEEN DOING DURING QUARANTINE?



Jennifer fostered two puppies during quarantine! They are very energetic and love to play in the new office.



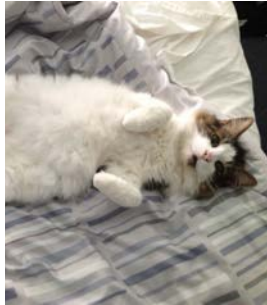
Sadie is enjoying playing Legos with her dog Bogey! If you haven't met him yet, you can follow his instagram: @bogeythedcfrenchie



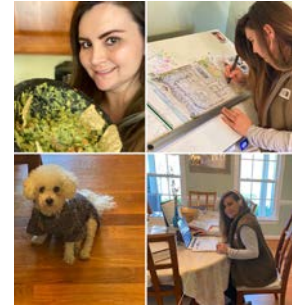
Lauren takes frequent afternoon walks with her husband and dog. She loves to explore her new neighborhood and sit at local coffee shops... outdoors of course!



Laurie is working hard at the home-office with her furry coworkers. Woof Woof!



Julie takes breaks from work to snuggle her cat, King the Cat!



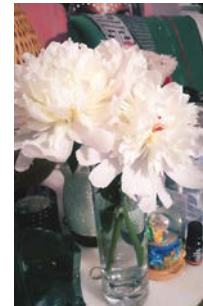
Emma has enjoyed playing with her dog, making delicious food, and challenging her creative side!



Hannah's dog, Calvin, is typing away getting the inbox cleared! Very important dog duty.



Michelle enjoyed a laugh as a shark danced in her lobby while delivering her food. Hilarious!



Timi's mother delivered fresh flowers from her garden to display. She was so thrilled to receive such a beautiful gift!



Colin got a hole in one! He had a great day on the links at Laurel Hill Golf Club and is looking forward to many more rounds of golf this summer.



Emily loves to sit on the porch with her dog, Sadie. Sometimes with a fun drink in hand!



Ashley has been tending to her garden and helped a mama bird protect her eggs!

2020 NEWH DCMETRO MAVENS

ARCHITECTURAL CERAMICS | BANDURA DESIGN | BRYAN ASHLEY FURNITURE | COHEN AZZINARO ASSOCIATES
COMPOSITION HOSPITALITY | COUNTRY CASUAL TEAK | DH COMPANIES | DURKAN | STREETSENSE | TARKETT

GOLD

CROSSLEY AXMINSTER | DESIGNER TILE & STONE | DISTINCTION HOSPITALITY | FAIRMONT DESIGNS | MILLIKEN
NATIONAL SOLUTIONS | SHAW CONTRACT SHAW HOSPITALITY | SPACIA GROUP | SIGNATURE CARPETS

SILVER

THE BO. GROUP | DEYOUNG & ASSOCIATES | KD SWANSON HOSPITALITY RESOURCE | KELLEX | MOMENTUM GROUP | SAMUELSON FURNITURE | SPARTAN SURFACES | TILEBAR

BRONZE